

**hitze**  
Since 1980



**TITAN**

HORIZONTAL PACKAGED BOILERS

These are compact skid mounted boilers with an internal furnace, output ranging from 500 - 6000 kgs/hr with a wide range of application. These boilers come in a variety of designs for added efficiency & affordability.

**Features**

- Max working pressure - 10.54 kg/cm<sup>2</sup>
- Models - 500 - 6000 kgs/hr
- Compact sturdy construction
- 2 pass, 3 pass dry back & wet back available
- Ease of installation & maintenance
- Multifuel application
- Higher pressures are available on request



TITAN 1000



TITAN 500

**TITAN**

HORIZONTAL PACKAGED BOILERS



Pressure reducing station

**TECHNICAL SPECIFICATIONS for TITAN series**

Code		Indian Boiler Regulation - 1950 & its latest amendments							
Model		Titan 500	Titan 750	Titan 1000	Titan 1500	Titan 2000	Titan 3000	Titan 4000	Titan 5000
Evaporation Capacity kg/hr (F & A 100 degrees)		500	750	1000	1500	2000	3000	4000	5000
Heating Surface Area in m <sup>2</sup>		20	30	40	60	80	118	159	196
Max working pressure (kg/cm <sup>2</sup> )		10.54	10.54	10.54	10.54	10.54	10.54	10.54	10.54
Max outlet temp (Degree Celsius)		185	185	185	185	185	185	185	185
No. of passes		2/dry back	2/dry back	3/wet back	3/wet back	3/wet back	3/wet back	3/wet back	3/wet back
Fuel consumption - Agro Waste (kg/hr @ 3500 GCV)		90	130	175	250	350	550	725	900
MOC - Shell, furnace, tube plate		SA 516 Gr 70	SA 516 Gr 70	SA 516 Gr 70	SA 516 Gr 70	SA 516 Gr 70	SA 516 Gr 70	SA 516 Gr 70	SA 516 Gr 70
MOC - Stay tubes, plain tubes		BS 3059	BS 3059	BS 3059	BS 3059	BS 3059	BS 3059	BS 3059	BS 3059
Feed pumps	Flow (m <sup>3</sup> /hr)	2	2	2	4	4	6	8	8
	Head(m)	110	110	110	120	120	120	120	120
	Rating(HP)	1.5	1.5	2	3	3	4	5	7.5
ID fan with motor	Flow (m <sup>3</sup> /hr)	NA/0.5	NA/0.75	1	1.5	2	3	4	5
	Head(m)	100	100	100	100	100	100	100	100
	Rating(HP)	2	2	3	3	5	7.5	10	15
Qty(Nos)		2	2	2	2	2	2	2	2
		1	1	1	1	1	1	1	1

**Features**

- Manufactured in accordance with IBR 1950 & its latest amendments
- Compact skid mounted package boiler
- Available in 2 pass dry back & 3 pass fully wet back models
- Designed with high heat transfer & grate area
- Minimum civil work involved
- Available in 10.54 & 17.5kg/cm<sup>2</sup> working pressures
- Additional accessories like MDC, Pressure reducing Stations, AWLC, APH, WPH chimney etc., can be provided on request



The above specifications are only indicative and not for construction. In our endeavor to update technology, we reserve the right to alter models and sizes without prior intimation.

**hitze**  
Since 1980

**HITZE GROUP OF COMPANIES**

# 45 - B, II Phase, Industrial Area, Peenya, Bangalore - 560 058 India.  
52 & 53, KIADB Industrial Area, Kunigal-572130 Tumkur Dist. Karnataka  
Tel: 080-2839 5610, 2372 2281, 4117 1143 e-mail: info@hitze.in Web: www.hitze.in

**hitze**  
Since 1980

FIRE YOUR IMAGINATION

Installations



NANO 300



TITAN 500



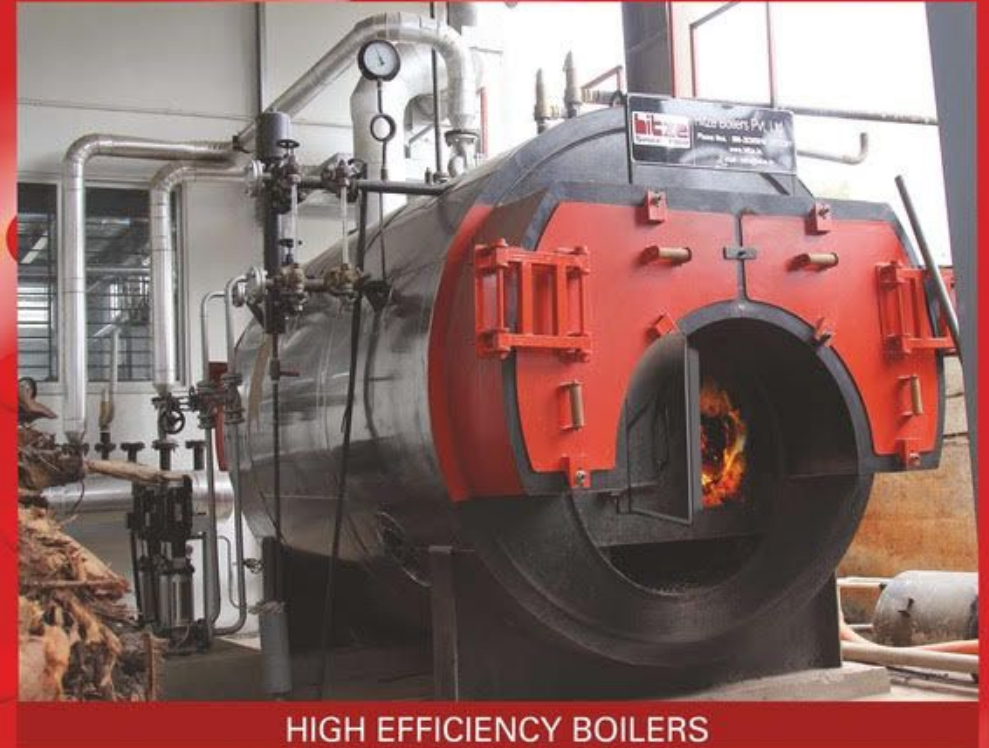
STORAGE TANK



TITAN 750



TITAN 2000



HIGH EFFICIENCY BOILERS



Bay 1

Bay 2



**hitze**  
Since 1980

**HITZE GROUP OF COMPANIES**

# 45 - B, II Phase, Industrial Area, Peenya, Bangalore - 560 058 India.  
52 & 53, KIADB Industrial Area, Kunigal-572130 Tumkur Dist. Karnataka  
Tel: 080-2839 5610, 2372 2281, 4117 1143 e-mail: info@hitze.in  
Web: www.hitze.in

srinath bidare 99453 96288

**hitze**  
Since 1980



NANO 300

**NANO**

SMALL INDUSTRIAL BOILERS

NANO's are IBR certified boilers with relaxed regulations introduced to replace the so called baby boilers which are being manufactured without any regulations. These boilers are more user friendly reducing cumbersome procedures for manufacturing & licensing.

The volumetric capacity is limited to 500 ltrs & therefore the largest model available is 400 kgs/hr.



NANO 400



Pressure reducing station

**NANO**  
SMALL  
INDUSTRIAL  
BOILERS



**TECHNICAL SPECIFICATIONS FOR NANO & SUPER NANO SERIES**

CODE	Indian Boiler Regulation - 1950 & its latest amendments							
	Nano 100	Super Nano 100	Nano 150	Nano 200	Super Nano 200	Super Nano 300	Nano 400	Nano 500
Evaporation Capacity kg/hr (F & A 100 degrees)	100	100	150	200	200	300	400	500
Heating Surface Area in m <sup>2</sup>	4	6	8	8	12	15	18	18
Max working pr (kg/cm <sup>2</sup> )	7.031	7.031	7.031	7.031	7.031	7.031	7.031	7.031
Max outlet temp	165	165	165	165	165	165	165	165
Fuel Consumption (kg/hr @ 3500Kcal/hr)	20	18	30	40	36	50	80	100
MOC - Shell, furnace, tube plate	IS 2062	IS 2062	IS 2062	IS 2062	IS 2062	IS 2062	IS 2062	IS 2062
MOC - Stay tubes, plain tubes	BS 3059	BS 3059	BS 3059	BS 3059	BS 3059	BS 3059	BS 3059	BS 3059
Feed pumps Flow (m <sup>3</sup> /hr)	1	1	1	1	1	1.6	1.6	1.6
Head	78	78	78	78	78	78	78	78
Rating	1	1	1	1.5	1.5	1.5	1.5	1.5
Qty	1	1	1	1	1	1	1	1

**Features**

- Manufactured in accordance with chapter XIV of IBR 1950
- No certified boiler operator required
- Compact design with robust construction
- Limited site work, with installation & commissioning in a day
- Multi-fuel applications
- Low investment & operating expenses
- Pressure part, Furnace and Smoke Box are made detachable for ease of maintenance.
- Super Nano series are built for higher efficiency with internal furnace for lower fuel consumption
- Can be provided with diesel or gas burners

The above specifications are only indicative and not for construction. In our endeavor to update technology, we reserve the right to alter models and sizes without prior intimation.



**hitze**  
Since 1980

**HITZE GROUP OF COMPANIES**

# 45 - B, II Phase, Industrial Area, Peenya, Bangalore - 560 058 India.  
52 & 53, KIADB Industrial Area, Kunigal-572130 Tumkur Dist. Karnataka  
Tel: 080-2839 5610, 2372 2281, 4117 1143 e-mail: info@hitze.in Web: www.hitze.in

COMPANY



HITZE was founded in 1980 by like minded engineers to provide heat transfer solutions to the industry. The company manufactures boilers certified by Director of Boilers, adhering to IBR & incorporates the latest manufacturing technologies to provide quality products with higher efficiency at an economical & affordable cost.

FACILITY



The manufacturing facility encompasses 50000 sqft with a covered shed of 30000sqft housing the latest automatic welding machine (SAW), CNC Plasma cutting, rolling, drilling machines & pressure testing stations along with skilled manpower abreast with the latest manufacturing processes.

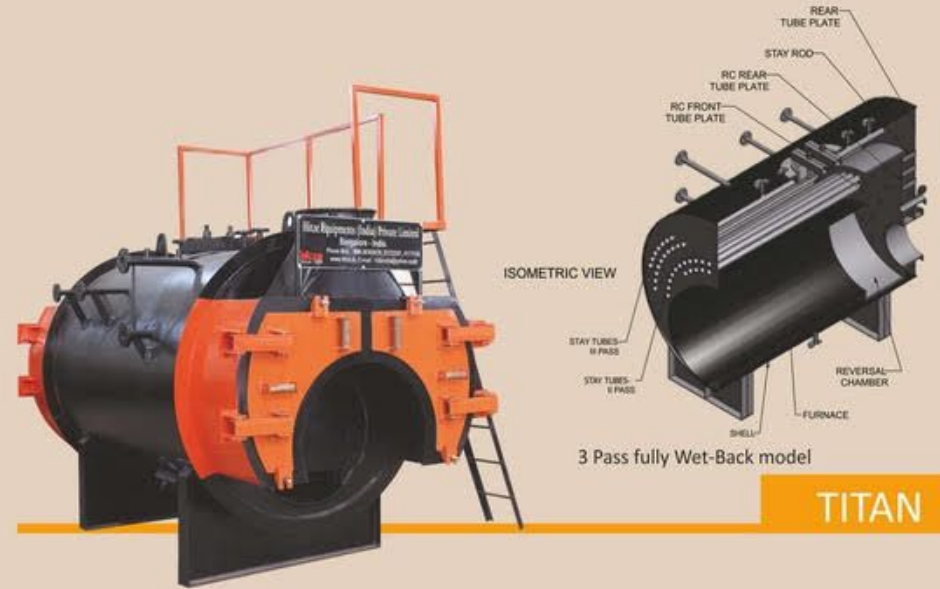


PRODUCTS

- NANO- Small Industrial Boilers
- TITAN- Horizontal package boilers
- Electric Boilers
- Hot water generators
- Industrial Dryers
- Air heaters
- Thermic fluid heaters
- Pressure Vessels

APPLICATIONS

- Textile, garments & laundries
- Chemical & pharmaceuticals
- Feed mills (cattle, poultry, rice, oil)
- Rubber, wood
- Cashew processing
- Agro industries (silk, cotton)
- Hotel, hostels & hospitals
- Distilleries



TITAN

TITAN - Horizontal Packaged Boilers

These are compact skid mounted boilers with an internal furnace, output ranging from 500 - 6000 kgs/hr with a wide range of application. These boilers come in a variety of designs for added efficiency & affordability.

Features

- Max working pressure - 10.54 - 17.5kg/cm<sup>2</sup>
- Models - 500 - 6000 kgs/hr
- Compact sturdy construction
- 2 pass, 3 pass dry back & wet back available
- Ease of installation & maintenance
- Multifuel application

NANO

NANO and Super Nano - Small Industrial Boilers

NANO's are IBR certified boilers with relaxed regulations introduced to replace the so called baby boilers which are being manufactured without any regulations. These boilers are more user friendly reducing cumbersome procedures for manufacturing & licensing.

The volumetric capacity is limited to 500 ltrs & therefore the largest model available is 500 kgs/hr.



Features

- Max working pressure - 7.031kg/cm<sup>2</sup>
- Models - 100 - 500kgs/hr
- Ease of operation & maintenance
- Compact design, occupies less space
- Multi fuel application
- Single & 2 pass models available
- Available in horizontal & vertical models
- Does not require a certified operator

Note : Additional accessories like PRS, economizer, AWLC, APH, WPH, dust collector, chimney etc are available on request.